



Turn paper stacks into results that stack up—  
high speeds, rich quality

## HP ScanJet Enterprise Flow 5000 s4



Fast, smooth scanning—  
even unattended



Peak workflow performance.  
Smarter scanning.



Professional-grade scanning  
that helps save time

Fast, smooth scanning—  
even  
unattended



Give your office powerful scan speed and accuracy, with batch-scanning performance customized for the needs of your business. Get fast, unattended scanning with the 80-sheet automatic document feeder (ADF). Confidently capture stacks of mixed paper sizes and weights. Seamlessly manage workflows with a scanner recommended for 6,000 pages per day. Scanning speeds of up to 50 pages per minute (ppm)/100 images per minute (ipm) for black-and-white, grayscale, and color<sup>1</sup> keep projects moving. Built-in software helps you save time and simplify complex jobs.



### The new office workhorse

Rely on this scanner time after time—recommended for 6,000 pages per day.



### Fits where you need it

Free up space for work. This HP ScanJet is small and slim—a modern design perfect for the desktop.



### Superb paper handling

Capture every page easily—even stacks of mixed media—with HP EveryPage and an ultrasonic sensor.<sup>2</sup>

# Peak workflow performance. Smarter scanning.

## Image capture

### Easy to control, with scans in one touch

Save time and improve performance with customized workflows. Create one-button scan settings for recurring tasks, and make selections using the LCD control panel.



80<sup>page</sup>  
ADF

### Quickly scan stacks of paper

Load up to 80 pages into the ADF for fast, unattended scanning.

50<sup>ppm</sup>  
100<sup>ipm</sup>

### Scan both sides in one pass

Capture entire documents with one-pass duplex scanning at 50 ppm/100 ipm.<sup>1</sup>

300  
dpi

### Look sharp

Count on accurate, enhanced images and text with every scan.

## Processing

### Automatically process documents

Detect bar codes for use in file naming, batch separation, and metadata; set misfeed detection; automatically delete blank pages; separate large scan jobs into documents by number of pages, barcode, blank pages, and document separator pages; apply digital stamps; merge pages in duplex scanning.



### Capture a wide range of document types

Handle paper sizes up to 122 inches (309.9 cm) and paper weights up to 110 lb (413g/m<sup>2</sup>). Scan A3-size documents without a carrier sheet.

## Delivery

### Scan into popular applications

Save time and simplify complex scan jobs with HP Smart Document Scan Software. Scan images directly into applications, without having to open another program, with included and full-featured TWAIN and ISIS<sup>®</sup>. Easily transfer scans into editable text, encrypted PDF files, and more file types, using built-in optical character recognition (OCR).



## Manage

### Remote monitoring for smarter scanning

Identify new devices and gain insight into scanning with HP Web Jetadmin remote discovery and monitoring.<sup>3</sup>



# Professional-grade scanning that helps save time



## Easily manage paper documents

Produce scans at up to 50 ppm/100 ipm with two-sided scanning that captures both sides at once.<sup>1</sup> The 80-page ADF and a recommended daily duty cycle of 6,000 pages make scanning easy and fast.



## Simply scan to mobile devices

Send scans directly to mobile devices with the HP JetAdvantage Capture App and the HP ScanJet Wireless Adapter 100 low-cost, optional wireless accessory.<sup>4</sup> Edit the image, save as popular file types, send to cloud destinations, and more.



## Professional-grade scanning

Capture rich text and images while helping to save time. Streamline work by creating one-button scan settings for recurring tasks. Simplify scanning with batch processing features such as metadata and indexing.

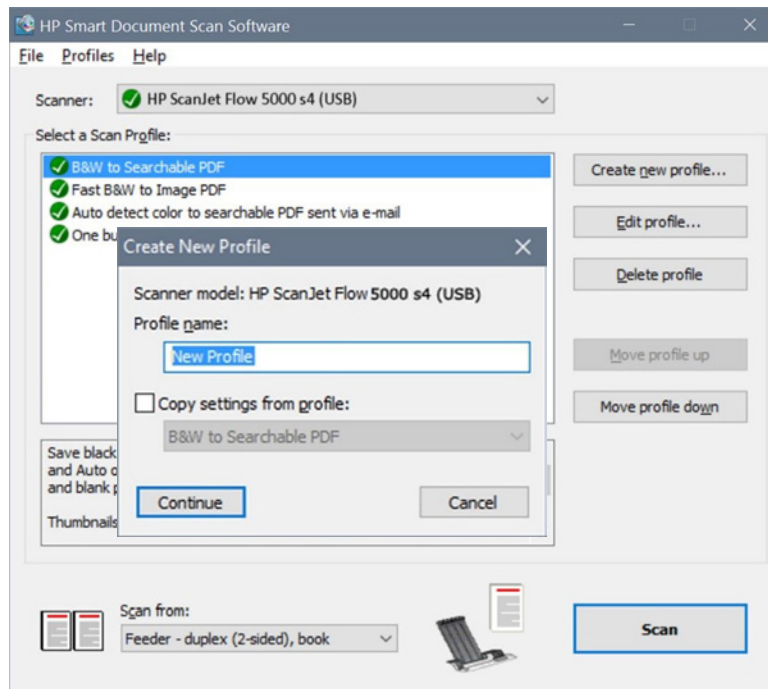
## HP Smart Document Scan Software (SDSS)

Designed for office workers, this easy-to-use interface lets you quickly set up and review selected settings, then preview and modify your images before finalizing the file.

- **Save time with a simple interface.** Create profiles for the types of scan jobs you perform most often, with settings such as paper size, resolution, file format, destination(s), and more. You can quickly launch the profiles from your computer, or assign them to the front panel on your scanner—so you can execute complex jobs at the touch of a button. Conveniently perform ad-hoc scanning for one-time jobs.
- **Help increase productivity with automation.** Configure scan settings to get the results you want: automatically crop, orient, detect color, separate batches, straighten, delete blank pages, and clean up images. Preview the scan and modify as necessary, then route to single or multiple destinations, including folder, email, and integrated cloud repositories.
- **Add value by customizing results.** Save files just as you want them—compress large files for more efficient storage, automatically adjust brightness, contrast and exposure, enhance edges, and remove color, background shading, punch holes, and irregularities to get the smallest file size and clear, readable scans.

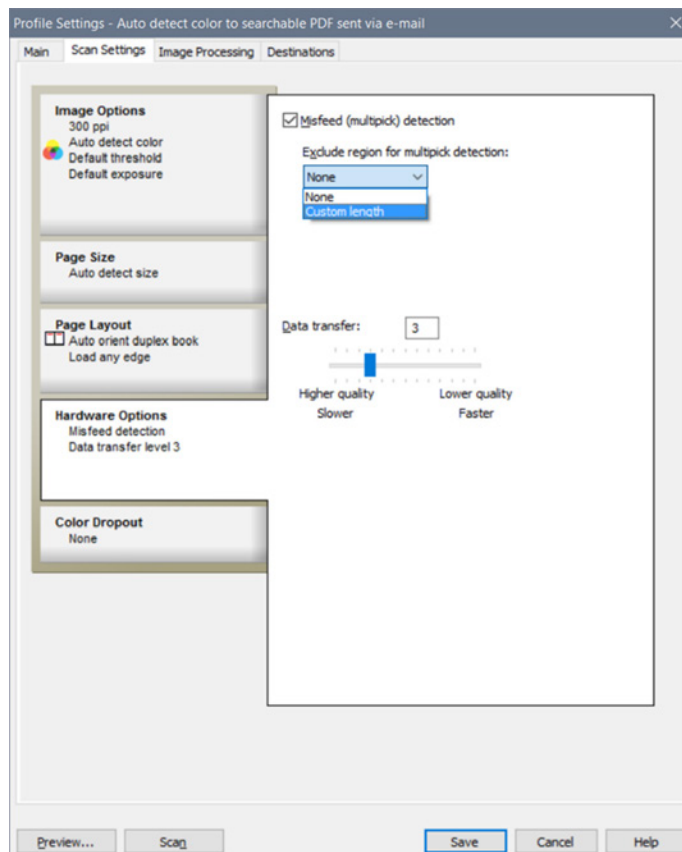
### Create and manage scan profiles

Choose from a number of scan profiles with preconfigured settings. Profiles can be created and edited for common scanning scenarios. You can even give profiles descriptive names that appear on the device control panel.



### Save time with helpful settings

From the **Scan Settings** tab, under **Hardware Options**, you can turn on misfeed detection. You can also specify a region of the scan to be excluded from multi-feed detection—for example, a note or a piece of tape placed on the page, which could be misinterpreted as a multi-feed.

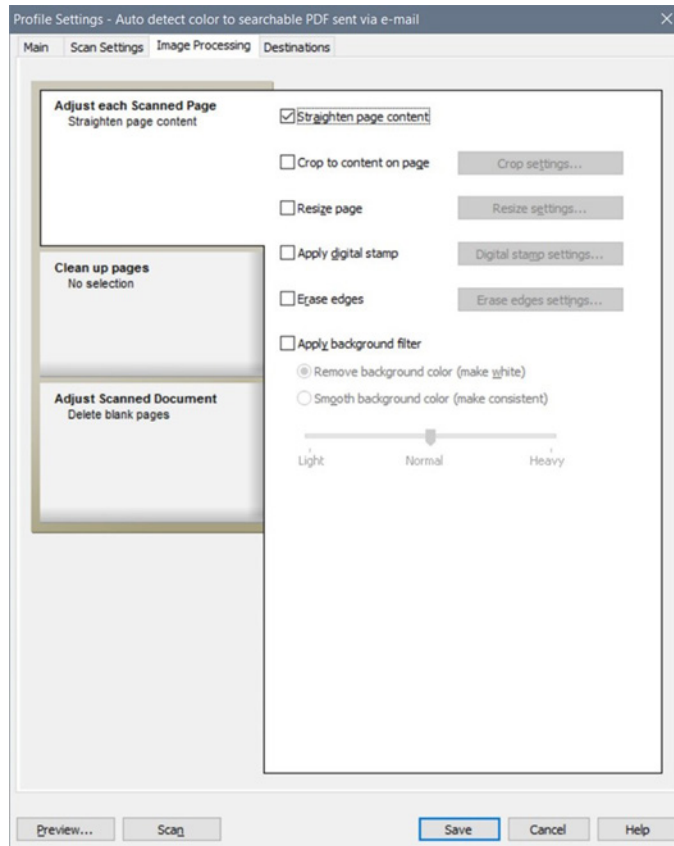


Work smarter and automate jobs with customized, one-touch settings. Spend less time scanning and more time focused on what matters most to your business.

### Get the results you want

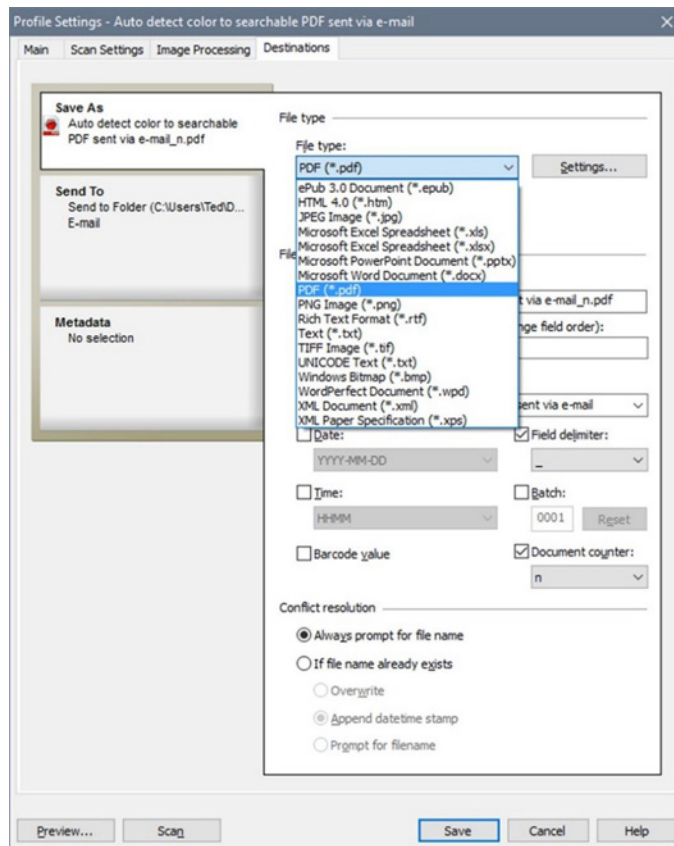
From the three fly-out menus under the **Image Processing** tab, you can:

- Take advantage of automatic tools to straighten page content
- Crop to the paper size or to the page content
- Resize pages for consistency
- Mark your document with a digital stamp
- Erase edges for a cleaner look
- Remove or regularize color backgrounds to improve legibility and consistency
- Remove blank pages, perform batch separation, remove punch holes, and more

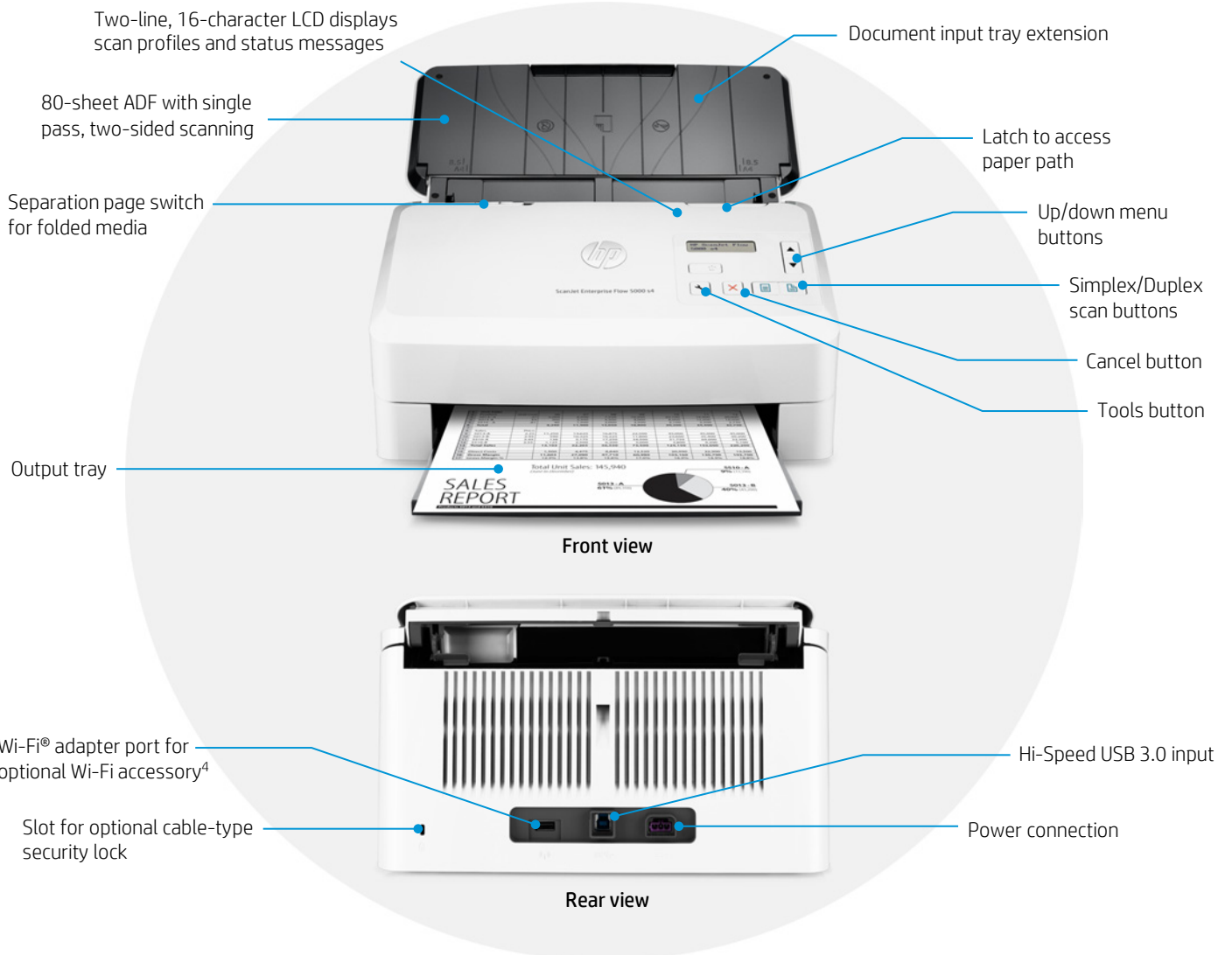


### Save what you want, where you want

The **Destinations** tab, **Save As** menu, lets you choose from common file formats. You can select routing to archival, processing, or begin a business workflow. Add an optional counter and reorder components of the file name by dragging and dropping them.



# Get to know the HP ScanJet Enterprise Flow 5000 s4



# What's new?



HP ScanJet  
Enterprise Flow  
5000 s4



HP ScanJet  
Enterprise Flow  
5000 s2/s3

Up to 50 ppm/100 ipm scan speed (black-and-white, grayscale, and color)<sup>1</sup>

Up to 25 ppm/50 ipm black-and-white, color<sup>1</sup>  
Up to 30 ppm/60 ipm black-and-white, color<sup>1</sup>

[Up to 2x faster scan speeds](#)

80-sheet ADF

50-sheet ADF

[Scan larger jobs more easily with a 60% larger ADF](#)

6,000-page daily duty cycle

2,000/4,000-page daily duty cycle

[Increase productivity with a 3x higher daily duty cycle](#)

Wireless (HP ScanJet Wireless Adapter 100 as optional accessory)<sup>4</sup>

Not available

[Convenient mobile scanning](#)

Scan A3 folded/scan card in portrait and landscape

Not available

[More versatile scanning](#)

Supports HP JetAdvantage Capture App<sup>4</sup> and HP Web Jetadmin<sup>3</sup>

Not available

[A more comprehensive solution set](#)

Supports 10.7-110 lb (40-413 g/m<sup>2</sup>) media weight

Supports 11-56 lb (41-209 g/m<sup>2</sup>) media weight

[Almost 2x greater ADF media weight capacity](#)



# Technical specifications

<b>Product number</b>	L2755A
<b>Scanner type and modes supported</b>	Sheet-feed scanning with ADF, single-pass two-sided scanning, color, grayscale, or black-and-white
<b>Scan technology</b>	CMOS Contact Image Sensor (CIS) using LED light source, dual-head ADF scanner
<b>Other advanced features</b>	Auto-color detect, auto-crop, auto-exposure, auto-orient, OCR, edge removal, background cleanup, remove hole, color drop out, straighten the page, scan to cloud, scan to email, PDF security, misfeed detection advance setting, batch processing, barcode, scan to multiple destinations
<b>Duty cycle (recommended)</b>	6,000 pages per day
<b>Control panel</b>	2-line 16 character per line LCD display, Simplex button, Duplex button, Cancel button, Power button with a LED and Tool button
<b>Scan speed at 300 dpi<sup>1</sup></b>	Up to 50 ppm/100 ipm scan speed black-and-white, grayscale, and color
<b>ADF scan resolution</b>	Optical: up to 600 dpi (color and mono, sheet-feed); output dpi settings: 75, 150, 200, 240, 300, 400, 500, 600
<b>Bit depth and grayscale</b>	24-bit external, 48-bit internal; 256 grayscale levels
<b>Compatibility</b>	TWAIN certified version 2.1, ISIS, WIA
<b>File formats (text and images)</b>	For text and images: ePub 3.0, HTML 4.0, Excel file format (*.xls, *.xlsx), PowerPoint file format (*.pptx), Word (*.docx), WordPerfect (*.wpd), searchable PDF, JPEG, PNG, BMP, TIFF, Text (.txt), Rich Text (rtf) XML and XPS
<b>Scan input modes</b>	Two scan modes (simplex/duplex) on front-panel for HP SDSS in Windows OS and third party applications via TWAIN, ISIS, and WIA
<b>Memory</b>	512 MB
<b>Processor</b>	550 MHz
<b>ADF media specifications</b>	
Input capacity	Up to 80 sheets
Custom sizes	2 x 2 in to 8.5 x 122 in (5.08 x 5.08 cm to 21.6 x 309.9 cm)
Standard sizes	Letter, Legal, Executive; A4, A5, A6, A7, A8, B5, B5 (JIS); long page support up to 122 in (309.9 cm)
Media weights	10.7 to 110 lb (40 to 413 g/m <sup>2</sup> )
Media types	Cut sheet paper, printed paper (laser and ink), pre-punched paper, bank checks, business cards, freight bills, carbonless forms, plastic carrier sheets for easily damaged documents, previously stapled media with staple removed
<b>Connectivity</b>	USB 2.0 and SuperSpeed USB 3.0; optional USB 2.0 port for Wi-Fi accessory
<b>Scan destinations</b>	Scan to email (using SMTP or via locally configured email client); Scan to printer; Scan to FTP; Scan to local or network folder; Scan to SharePoint; Scan to cloud destinations
<b>Mobile capabilities<sup>4</sup></b>	Initiate scans directly from mobile devices via the HP ScanJet Wireless Adapter 100 optional wireless accessory and the HP JetAdvantage Capture App, then edit, save, and share files
<b>Compatible operating systems</b>	Microsoft® Windows® 10, 8.1, 8, 7: 32-bit or 64-bit
<b>Minimum system requirements</b>	Microsoft® Windows® 10, 8.1, 8, 7: 32-bit or 64-bit, 2 GB available hard disk space, CD-ROM/DVD drive or Internet connection, USB port, Microsoft® Internet Explorer
<b>Dimensions (width x depth x height)</b>	12.20 x 7.79 x 7.48 in (310 x 198 x 190 mm) <sup>5</sup>
<b>Weight</b>	8.4 lb (3.8 kg)
<b>What's in the box</b>	HP ScanJet Enterprise Flow 5000 s4 sheet-feed scanner; Installation guide, Support flyer, Warranty guide; 2 CDs

<b>Software included</b>	HP WIA scan driver, HP TWAIN certified scan driver, HP Smart Document Scan Software, HP Scanner Tools Utility, I.R.I.S. Readiris™ Pro, I.R.I.S. Cardiris™, Nuance® PaperPort®, EMC ISIS driver
<b>Warranty</b>	One-year bench limited warranty whole unit replacement, phone and Web support included. Warranty may vary by country as required by law. Go to <a href="http://hp.com/support">hp.com/support</a> to learn about HP world-class service and support options in your region.
<b>Environmental ranges</b>	
Temperatures	Recommended operating: 50 to 95° F (10 to 35° C); Storage: -40 to 140° F (-40 to 60° C)
Relative humidity range	Operating range: 15 to 80% RH (non-condensing); Storage range: 0 to 90% RH (non-condensing)
<b>Acoustic sound power emissions</b>	6.6 B(A)
<b>Power specifications<sup>6</sup></b>	ENERGY STAR® certified, ErP Lot 26, CECP, EPEAT® Silver registered models available <sup>7</sup>
Power supply	External power adapter; Input: 90 to 246 VAC (50/60 Hz)
Power consumption	Ready: 4.4 watts, Sleep: 0.8 watts, Off/Auto-off: 0.1 watts
Energy-saving features	HP Auto-Off technology; LED light source (no warm-up time required) <sup>8</sup>
<b>Environmental specifications</b>	RoHS-compliant, HP GSE standard
<b>Safety and regulatory compliance</b>	IEC 60950-1:2005 +A1 +A11 +A12 and all applicable amendments; CSA/UL 60950-1, 2nd edition (2007); EN 60950-1:2006 +A11 +A1 +A12 +A2; EAC safety; Canada cUL CoC; China CCC; European Union CE; Kenya PVOC; Kuwait TER; Nigeria SON; Saudi Arabia SASO; South Africa NRCS; Taiwan BSMI; Ukraine safety approval
<b>Electromagnetic emission standard</b>	Class B Emissions; CISPR 22:2008 (International); European Union EMC Directive 2014/30/EU, EN 55022:2010 (CE mark); China GB9254-2008 (CCC); Taiwan CNS13438:2006 (BSMI); USA CFR47 Part 15, Subpart B (FCC); ICES-003:2012 Issue 6 (Canada); Australia C-tick (includes New Zealand); KN 22 and Korea KCC; EAC EMC Certificate; Ukraine EMC approval; EN 61000-3-2:2014 (harmonics); EN 61000-3-3:2013 (flicker); Immunity CISPR 24:2010, EN 50024:2010

# Ordering information

Use accessories and supplies specifically designed for the scanner to help provide efficient performance. To order the accessories and supplies listed here, go to [hp.com](http://hp.com). To contact HP by country, please visit [hp.com/go/contact](http://hp.com/go/contact). If you don't have access to the Internet, contact your qualified HP dealer, or call HP (U.S.) at (800) 282-6672.

<b>Scanner</b>	HP ScanJet Enterprise Flow 5000 s4 Sheet-feed Scanner	L2755A
<b>Wireless Accessory</b>	HP ScanJet Wireless Adapter 100	L2761A
<b>Supplies</b>	HP ScanJet Enterprise Flow 5000 s4 roller replacement kit	L2756A

Learn more at  
[hp.com](http://hp.com)

## Notes

<sup>1</sup> Black-and-white scan speed measured at 300 dpi using included HP Smart Document Scan Software. Color scan speed measured at 300 dpi. Actual processing speeds may vary depending on scan resolution, network conditions, computer performance, and application software.

<sup>2</sup> HP EveryPage is referred to as HP Precision Feed on HP ScanJet devices introduced prior to May 2013.

<sup>3</sup> HP Web Jetadmin is available for download at no additional charge at [hp.com/go/webjetadmin](http://hp.com/go/webjetadmin). Support for the HP ScanJet Enterprise Flow 5000 s4 will be available mid-November 2016.

<sup>4</sup> Scanning from a mobile device requires the HP Wireless Adapter 100 (L2761A), which must be purchased separately, and the HP JetAdvantage Capture App. The app is available for mobile devices running Android™ version 4.0 and higher, and can be downloaded from the [Google Play™ store](https://play.google.com/store). For more information, see [hp.com/go/documentmanagement](http://hp.com/go/documentmanagement). Wireless performance is dependent on physical environment and distance from access point and may be limited during active VPN connections. Wi-Fi Direct® scanning requires the mobile device to be connected directly to the Wi-Fi® network of the scanner. Wi-Fi and Wi-Fi Direct are registered trademarks of Wi-Fi Alliance®.

<sup>5</sup> With input and output trays folded and covers closed.

<sup>6</sup> Power requirements are based on the country/region where the scanner is sold. Do not convert operating voltages. This will damage the device and void the product warranty.

<sup>7</sup> EPEAT Silver registered models of this product are available where HP registers imaging and equipment products.

<sup>8</sup> Compared with products that use cold cathode fluorescent lamp (CCFL) copying.

Sign up for updates  
[hp.com/go/getupdated](http://hp.com/go/getupdated)



Share with colleagues



Rate this document

---

© Copyright 2016 HP Development Company, L.P. The information contained herein is subject to change without notice. The only warranties for HP products and services are set forth in the express warranty statements accompanying such products and services. Nothing herein should be construed as constituting an additional warranty. HP shall not be liable for technical or editorial errors or omissions contained herein.

Android and Google Play are trademarks of Google Inc. ENERGY STAR is a registered trademark owned by the U.S. Environmental Protection Agency. Microsoft and Windows are U.S. registered trademarks of the Microsoft group of companies.

4AA6-6755ENUC, September 2016, Rev. 1

